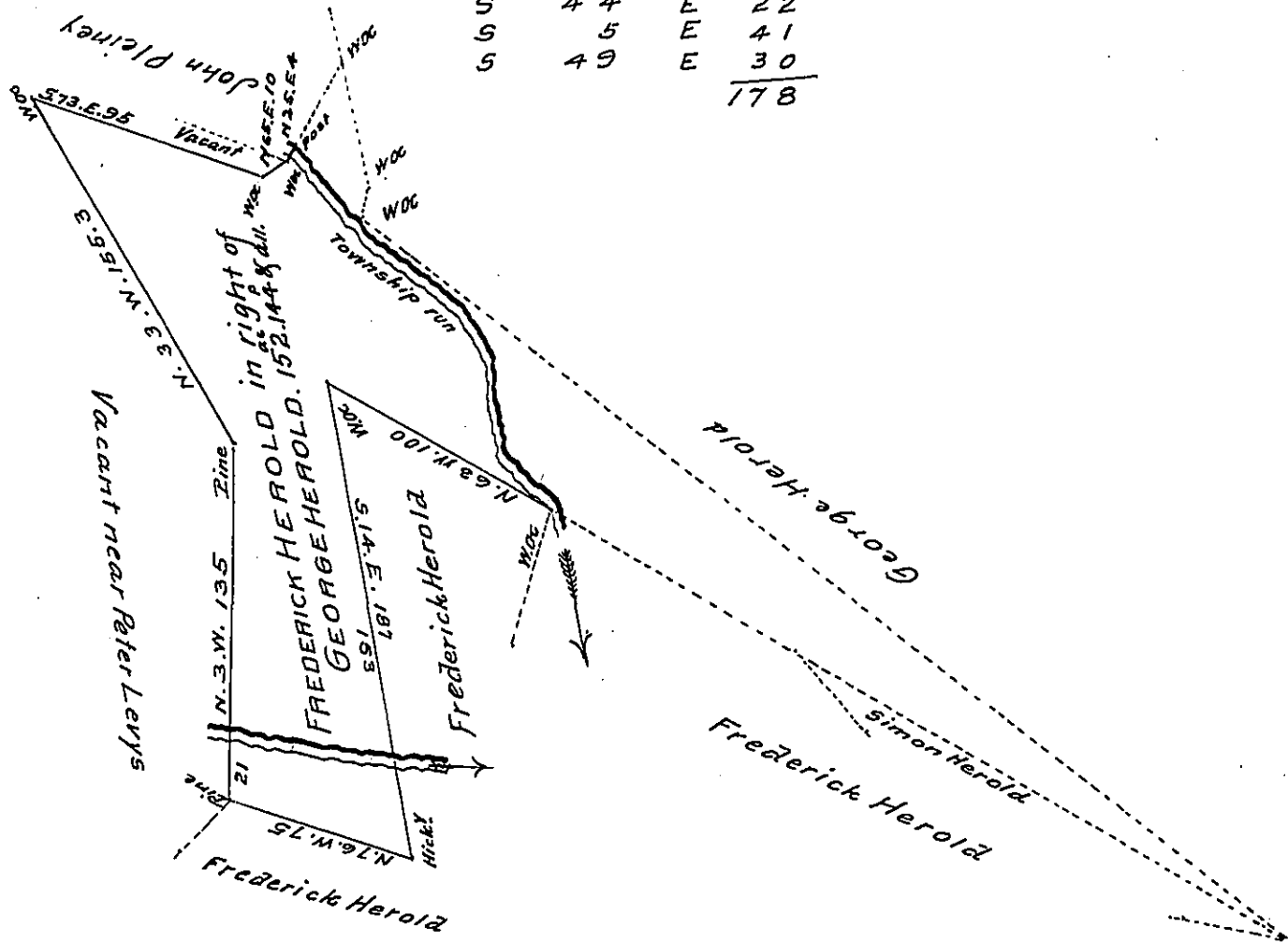


Courses & distances
down the run

S	43	E	40
S	59	E	45
S	44	E	22
S	5	E	41
S	49	E	30
			178



A Draught of a Tract of land called _____ situate in formerly (Penns township Northumberland County) Now this part in Perry township Union County containing One hundred and fifty two acres and One hundred and forty four perches and the usual allowance of six per Cent for roads &c.

Surveyed the sixth day of January A.D. One thousand eight hundred and eighteen for Frederick Herold being part of a larger tract of land which was surveyed for George Herold in pursuance of his ^{warrant} bearing date the twenty ninth day of July A.D. One thousand seven hundred and eighty five containing Two hundred and nine acres & the allowance &c

Simon Snyder Junr D.S.

IN TESTIMONY that the above is a copy of the original remaining on file in the Department of Internal Affairs of Pennsylvania, made conformably to an Act of Assembly approved the 16th day of February, 1833, I have hereunto set my Hand and caused the Seal of said Department to be affixed at Harrisburg, this eleventh day of February 1908

Henry Houck
Secretary of Internal Affairs.